

# STADT WOLFACH

## BEBAUUNGSPLAN 'ROTHEKREUZBERG'

### PLANÄNDERUNG

PLAN 1.3

REGELSCHNITTE  
M. 1:200/200

STADT WOLFACH  
DER BÜRGERMEISTER

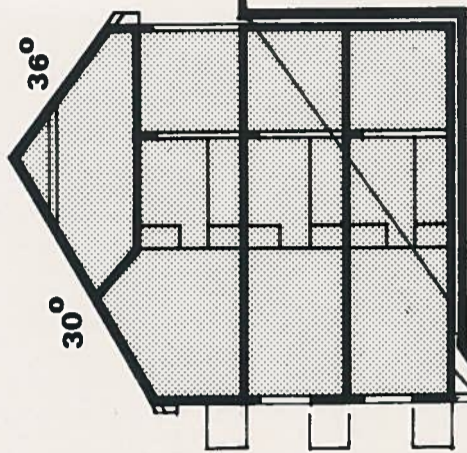


PLANUNG

APRIL 1979  
JAN. 1980

BÜRO FÜR STADT- u. REGIONALPLANUNG  
PROF. E. HANGARTER 7502 MALSCH

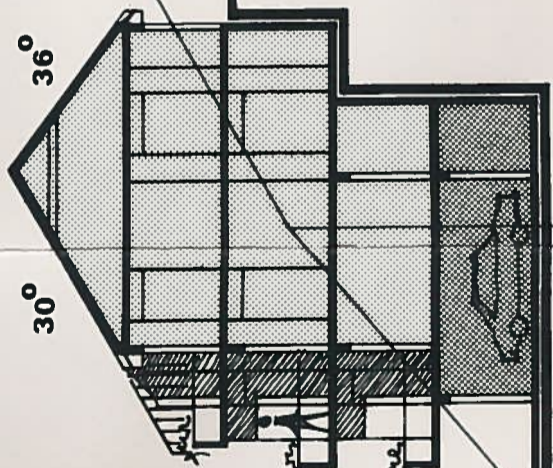
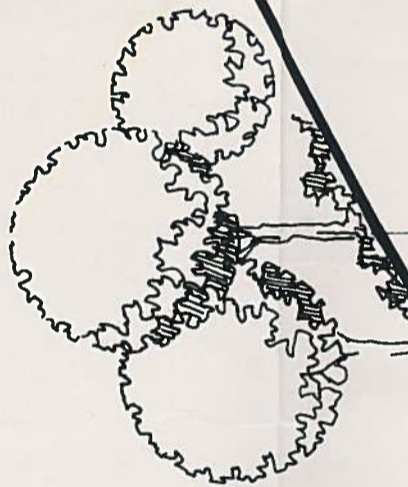
# SCHNITT I-I



EG.

1. UG

2. UG



DG

OG

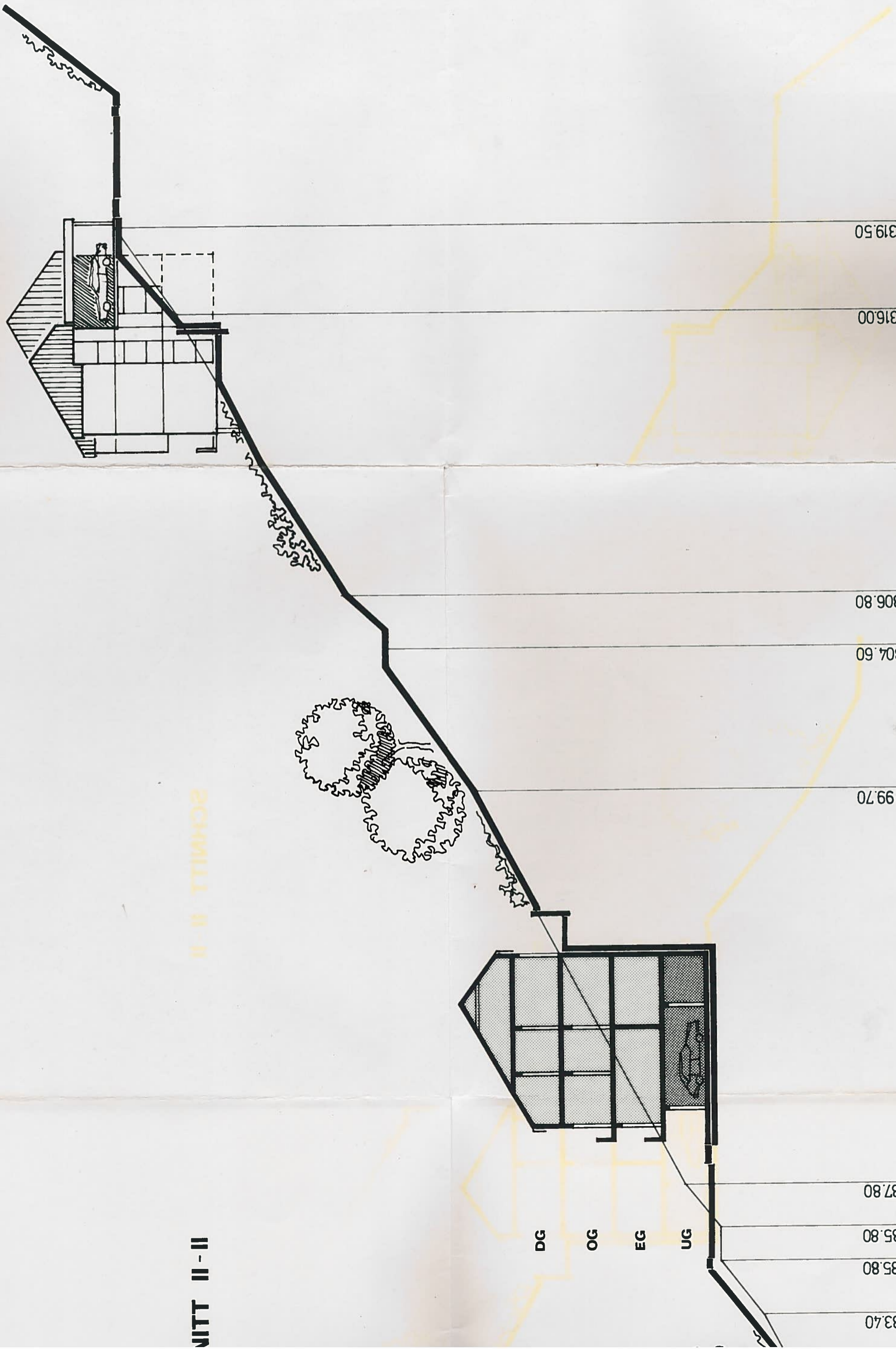
EG

UG

280.80	- 36.60	- 34.20
280.90		
283.10	- 27.50	
283.40	- 23.00	
289.80	- 15.50	
298.70	0.0	
304.10	+ 10.40	
310.10	+ 18.00	
315.40	+ 26.30	
315.80	+ 29.30	

**SCHNITT II - II**

**SCHNITT II - II**



283.40

285.80

285.80

287.80

DG  
OG  
EG  
UG

299.70

304.60

306.80

316.00

319.50

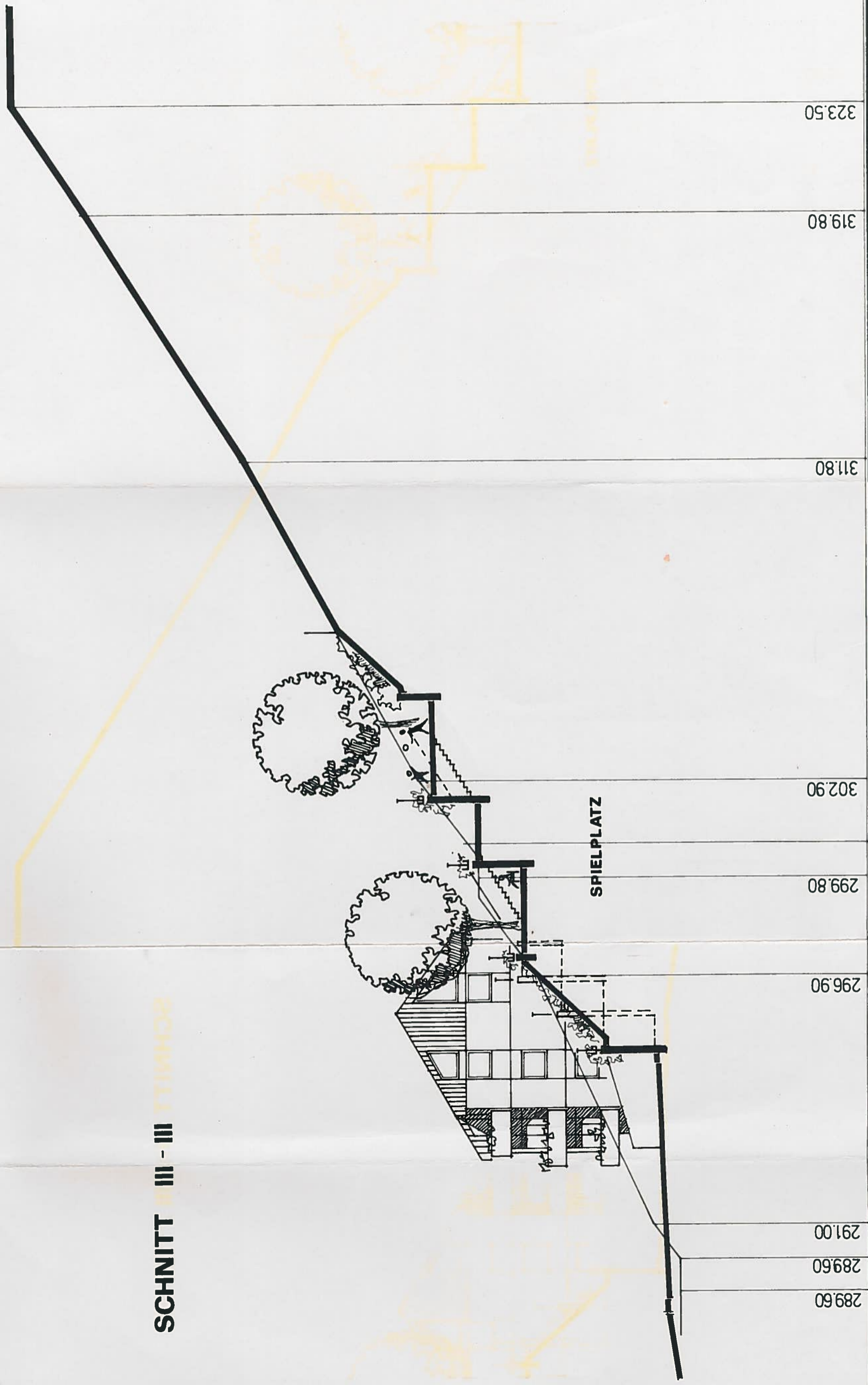
-29.50 -26.5 -24.6 -22.20

+8.00 +11.00

+26.90

+31.80

**SCHNITT III - III**



289.60	-229	-213	-19.50
291.00			
296.90	-6.80		
299.80	-1.70	0.0	+3.20
302.90			
311.80	+19.60		
319.80	+32.20		
323.50	+37.80		